

TRAFFIC MANAGEMENT NOTES:
 1) All temporary traffic management shall be in accordance with Chapter 8 of the Traffic Signs Manual.
 2) All temporary traffic management shall be in accordance with the Traffic Signs Regulations and General Directions 2016.
 3) All temporary traffic management shall conform to the Safety at Street Works and Road Works, A Code of Practice.
 4) All signing should be located 450mm minimum from any carriageway.
 5) All temporary traffic management sign locations are indicative and are subject to on site approval from the Engineer.
 6) Stop & Go boards are to be accessible and brought into operation if there is traffic signal failure.

DETAIL B (B)
 Single Carriageway 40mph or less - 450mm traffic cones, spacing 1.5m.
 Single Carriageway 50mph or more - 750mm traffic cones, spacing 1.5m.
 Notes:
 1) During darkness, warning lights to BS EN 12352:2006 should be provided in accordance with Table A1.3 (Appendix 1).
 2) 45° tapers have 1.2m spacing, no relaxations.
 3) On motorways and all-purpose dual carriageway roads with hard shoulders on which the national speed limit applies, 1m cones will be required for both standard works and works for which relaxations may be applied, for both lead tapers and the facing wall of a taper change.

DETAIL C1 (C1)
 Single Carriageway 40mph or less - 450mm traffic cones, spacing 1.5m.
 Single Carriageway 50mph or more - 750mm traffic cones, spacing 1.5m.
 Notes:
 1) During darkness, warning lights to BS EN 12352:2006 should be provided in accordance with Table A1.3 (Appendix 1).
 2) For relaxation to Detail C1 see Table A1.3 (Appendix 1).

SAFETY ZONE DIMENSIONS
 Permanent speed limit 30mph or less
 Sideway safety zone 0.5m
 Longways safety zone 0.5m
 (Dimensions are minimal)

Traffic Signal Head Timings

Phase 1	Phase 2
Green xx sec	Green xx sec
Red xx sec	Red xx sec

Key

- Traffic sign
- Traffic cone/cylinder
- Traffic signal
- No waiting cone
- Pedestrian barrier
- Pedestrian signal

QR Code:

Checked by:

Customer:

Job reference:

Location:

Date:

Description: 2-Way Signals

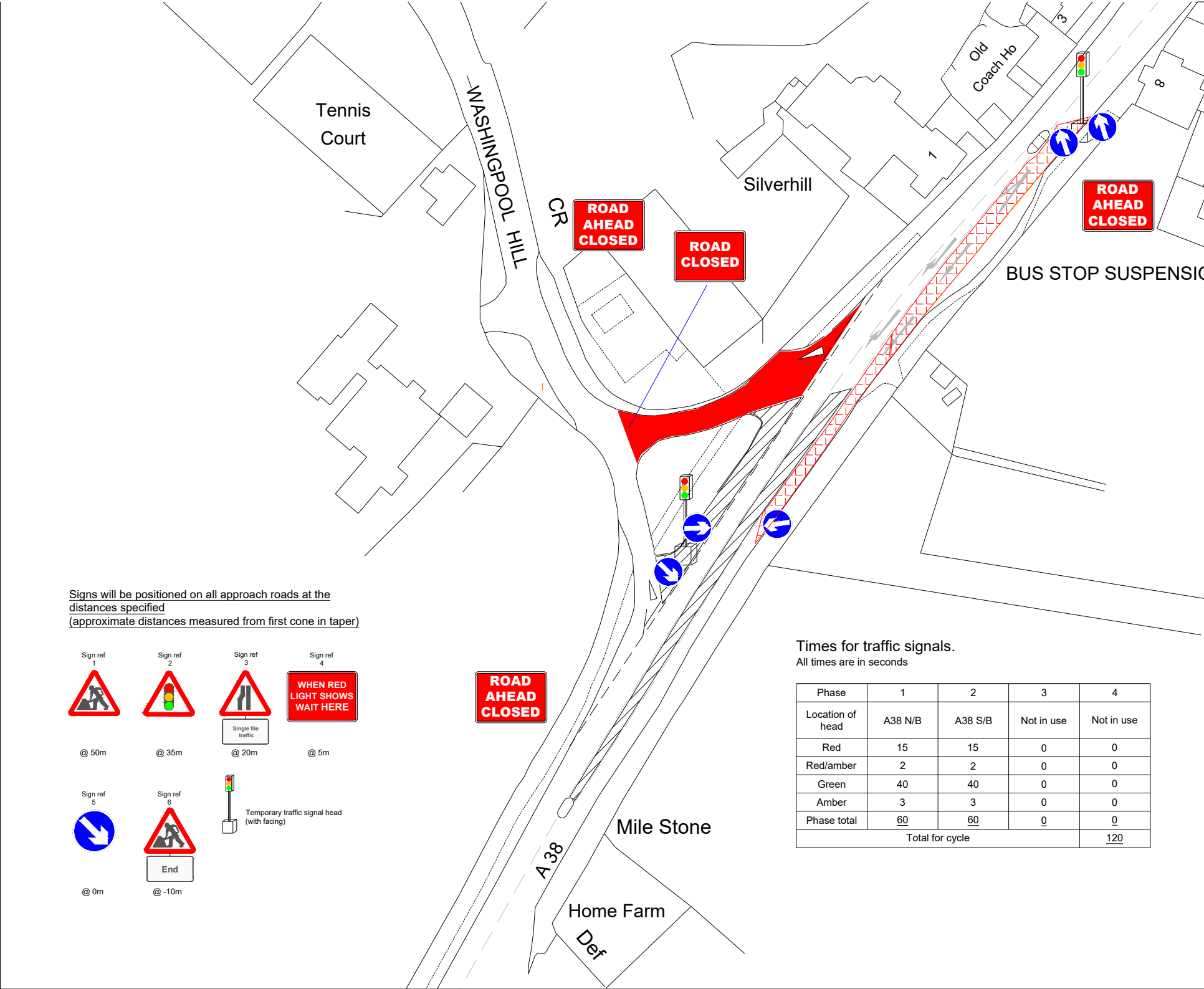
Scale: OS HA:

Core Highways
www.corehighways.com

Produced by:

Drawing reference:

This Drawing is subject to Copyright and remains the property of Core Highways. Contain Ordnance Survey data.



Signs will be positioned on all approach roads at the distances specified (approximate distances measured from first cone in taper)

Sign ref 1 @ 50m	Sign ref 2 @ 35m	Sign ref 3 @ 20m	Sign ref 4 @ 5m
Sign ref 5 @ 0m	Sign ref 6 @ -10m		

Times for traffic signals.
 All times are in seconds

Phase	1	2	3	4
Location of head	A38 N/B	A38 S/B	Not in use	Not in use
Red	15	15	0	0
Red/amber	2	2	0	0
Green	40	40	0	0
Amber	3	3	0	0
Phase total	60	60	0	0
Total for cycle			120	